



We aim to please by meeting any customer needs.  
Whether it be ***camps & conference centers, addiction  
& recovery centers, mental health centers, transitional  
homes, or correctional facilities***, we deliver our  
high-quality furniture at factory direct pricing.

# CONTENTS

WHY JESSCRATE FURNITURE?

1

A quick walkthrough of JessCrate wood processing, and the actions we take regarding environmental awareness.



JESS CRATE CLASSIC WOOD

2

- Beds & Bunk Beds  
**Page 2**
- Mission & Campus Collections  
**Page 5**
- Chests, Dressers, & Drawer Units  
**Page 7**
- Wardrobes & Storage  
**Page 8**
- Living Room Seating & Occasional Tables  
**Page 10**
- Dining Tables & Seating  
**Page 12**
- Custom Lacquers, Fabrics & Vinyls  
**Page 15**

JESS STEEL

17

- Campus Steel Collection  
**Page 17**
- Beds & Bunk Beds  
**Page 19**
- Dining Tables & Seating  
**Page 21**
- Storage  
**Page 23**
- Lockers

JESS BEHAVIORAL HEALTH

25

- High Impact Beds & Behavioral Health Furniture  
**Page 25**



JESS UPHOLSTERY

27

- Custom Fully Upholstered Furniture to meet any needs.



MATTRESSES & MORE

29

- Mattresses
- Linens
- Personal Care Products
- Bed Bug Covers



SHIPPING & WARRANTY

31

- Warranty & Returns

## NEED HELP?

We pride ourselves on being a full service furniture solution. If there is anything you need but don't see, let us know! We'd love to help.

**(800)220-JESS**



FACTORY DIRECT. LOCAL DELIVERY. MADE IN THE USA



# WHY "CRATE-STYLE" FURNITURE?



## HANDCRAFTED

Every piece of Jess Crate Wood Furniture is handcrafted in our North Carolina factory. Our pine is dried to our specifications of less than 10% moisture content for added stability, durability, and life expectancy.

All case goods use high quality French Dovetail drawer boxes. During sub-assembly each piece is secured with screws, glue, and nails. Afterwards, edges are routed for environmentally friendly water-based stains and clear coat finishes.

Our sanding and finishing teams go over each piece by hand to give a smooth custom six-step finish. Cushions are constructed of high-density polyurethane foam. Zippered upholstery materials are available in a variety of styles, colors, and materials -- all hand sewn for a custom fit.

## ENVIRONMENTALLY FRIENDLY

Jess Crate Furniture is made from the southern yellow pine tree, harvested from the most densely covered forest in North Carolina.

More trees are planted than are harvested each year here. This creates and maintains resources for future generations of wildlife preservation and recreation. Our stains and lacquer finishes are completely water based. They have no harmful effects on the environment or you, our customer.

## BEDS & BUNK BEDS - Day Beds / Loft Beds / Bunks

**LADDER END** - All beds are customizable to meet your needs. All beds are three ply solid southern yellow pine headboards & footboards. The bedrails are 2"x 6" solid southern yellow pine.



**JC-120**

### LADDER-END TWIN BUNK

Can be separated to form two twin beds as seen to the right (JC-121)  
Dimensions: 42"W x 79"L x 68"H



**JC-121**

### LADDER-END TWIN BED

Dimensions: 42"W x 79"L x 38"H



**JC-120SL**

### LADDER-END TWIN BUNK with ATTACHED SIDE LADDER & SAFETY RAIL

Dimensions: 42"W x 79"L x 68"H



**JC-123**

### LADDER-END LOFT BUNK BED

Dimensions: 42"W x 79"L x 68"H



**JC-173**

### LADDER-END TWIN OVER FULL BUNK w/ CHERRY LACQUER

Can be separated into a full & twin bed  
Ladder sold separately  
Dimensions: 42"W x 79"L x 68"H



## BEDS & BUNK BEDS - Day Beds / Loft Beds / Bunks / Trundle Beds / Extra Parts

**SOLID END** - All beds are customizable to meet your needs. All beds are three ply solid southern yellow pine headboards & footboards. The bedrails are 2"x 6" solid southern yellow pine.



**JC-115**

### **SOLID-END TWIN BUNK**

Can be separated to form two twin beds  
Dimensions: 42"W x 79"L x 68"H



**JC-116**

### **SOLID-END TWIN BED**

Dimensions: 42"W x 79"L x 38"H



**JC-117**

### **SOLID-END DAY BED**

Dimensions: 42"W x 79"L x 29"H



**JC-118**

### **SOLID-END LOFT BED**

Dimensions: 42"W x 79"L x 68"H



**JC-199**

### **GUARDRAIL & SIDE LADDER**

Available together or separately  
JC-188 - 3/4" Guardrail Set  
JC-195 - Side Ladder



### **JC-171 - SOLID-END CAPTAIN'S BED with BOOKCASE HEADBOARD**

Dimensions: 42"W x 79"L x 55"H

### **JC-170 - SOLID-END CAPTAIN'S BED**

Dimensions: 42"W x 79"L x 40"H



### **JC-110 - TWO DRAWER UNDER BED STORAGE UNIT**

Fits under all Jess Crate bed frames  
Piece is stackable & each drawer opens independently  
Dimensions: 75"W x 21"L x 9"H



### **JC-112 - UNDER BED ROLLING STORAGE UNIT**

Mounted on four casters for easy mobility  
Two can be combined to fit under any Jess Crate bed  
Dimensions: 39"W x 36"L x 9"H

## BEDS & BUNK BEDS



### JC-124 CUBBIE END TWIN BUNK BED

Ten compartment cubbie

Cubbie Bunks also made in 30" & 36" widths

Dimensions: 42"W x 92"L x 68"H

### JC-125 STAND ALONE CUBBIE

Ten compartment cubbie

Dimensions: 42"W x 12"D x 68"H

### JC-127 STAND ALONE CUBBIE w/ HANGING BAR

(Cherry Lacquer) Seven multi-size cubbies

Dimensions: 42"W x 15"D x 68"H



### JC-140

#### TODDLER BED

Specifically designed for toddler use

Same durable Jess Crate construction

Uses a standard crib-size mattress

Dimensions: 30"W x 51"L x 20"H



### JC-172

#### STAIRCASE BUNK BED

The ideal safety option for children

Dimensions: 42"W x 79"L x 68"H



### JC-180

#### TRUNDLE BED

Includes a 4" foam mattress

mounted on four casters for easy mobility

Available as two or three drawer unit

Dimensions: 42"W x 79"L x 9.5"H

## BED ACCESSORIES & EXTRA PARTS -

Separate Headboards & Footboards have the same construction as our beds in solid yellow pine.

JC-132 - TWIN HEADBOARD	42" x 36"
JC-142 - FULL HEADBOARD	58" x 36"
JC-152 - QUEEN HEADBOARD	66" x 36"
PT-100 - FULL HARDWARE KIT	
PT-101 - SINGLE BED HARDWARE	(8) 5" Lag Bolts, (8) 1 3/4", (8) washers
PT-105 - SET of 4 STEEL PINS	3/8" x 3"
PT-115 - CLASSIC CRATE SIDE RAIL	75"
PT-120 LADDER HOOKS	(2) 1 1/2" Hooks, (4) 1 1/2" screws, (2) 3/4" screws

## JESS CRATE COLLECTIONS - Mission Collection / Campus Collection

### MISSION COLLECTION -

All classic crate products can be made in the Mission Style with the custom Cherry Lacquer finish and optional drawer handles.



**JC-3121-60 - MISSION STYLE BEDS**

(Queen)

**JC-3121-54**

(Full)

**JC-3121-39**

(Twin)



**JC-3120SL**

**MISSION BUNK BED**

**w/ ATTACHED SIDE LADDER**

42"W x 79"L x 68"H



**JC-3511 - MISSION SOFA**

76"W x 32"D x 25"H

**JC-3521 - MISSION CHAIR**

28"W x 32"D x 25"H

**JC-3531 - MISSION LOVE SEAT**

52"W x 32"D x 25"H



**JC-3402 - 42" THREE DRAWER DESK**

42"W x 24"D x 30"H



**JC-3709 - 42" BUFFET TABLE**

58 1/2"W x 21 1/2"D x 31 1/4"H

**JC-3209 - MIRROR  
for DOUBLE DRESSER**

58 1/2"W x 2 1/2"D x 31 1/4"H

**JC-3207 - DOUBLE DRESSER**

57"W x 19"D x 68"H





## CAMPUS COLLECTION -

All classic crate products can be made in the Campus Style with custom Black Lacquer finish and optional drawer handles.



**JC-4521 - CAMPUS CHAIR**  
28"W x 32"D x 25"H



**JC-4531 - CAMPUS LOVE SEAT**  
52"W x 32"D x 25"H

**JC-4511 - CAMPUS SOFA**  
76"W x 32"D x 25"H



**JC-4205 - CAMPUS  
FIVE-DRAWER CHEST**  
30"W x 19"D x 49 1/2"H



**CAMPUS STYLE BEDS**

### CAMPUS STYLE HEADBOARD



**JC-4121-60 - (Queen)**  
**JC-4121-54 - (Full)**  
**JC-4121-39 - (Twin)**



**JC-4205 - CAMPUS  
NIGHT STAND**  
19"W x 18"D x 22 1/2"H



**JC-4207 - CAMPUS  
DOUBLE DRESSER**  
57"W x 19"D x 32 1/2"H

## ENTERTAINMENT & STORAGE - Chests / Dressers / Drawer Units / Wardrobes

**CHESTS / DRESSERS / DRAWER UNITS** - All are hand crafted solid southern yellow pine with the choice to include a laminate top for ease of maintenance and prevention of stains. There are custom lacquers and multiple drawer options like recessed drawer pulls and silver handles. The center drawer glide adds even more stability and strength.

- JC-203 THREE DRAWER CHEST** 30"W x 19"D x 30"H  
**JC-204 FOUR DRAWER CHEST** 30"W x 19"D x 40 1/2"H  
**JC-205 FIVE DRAWER CHEST** 30"W x 19"D x 49 1/2"H  
**JC-206 SIX DRAWER CHEST** 30"W x 19"D x 58 1/4"H



**DARK WALNUT**



**AGED HONEY**



**CHERRY**



**BLACK**



**JC-207**

**DOUBLE DRESSER**

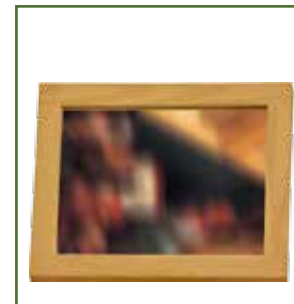
Dimensions: 57"W x 19"D x 68"H



**JC-208**

**MEDIA CHEST**

Dimensions: 38"W x 18"D x 32 1/2"H



**JC-209**

**MIRROR for CHESTS**

Dimensions: 30"W x 36"H

**JC-219 MIRROR for DOUBLE DRESSER**

Dimensions: 36"W x 41"H



**JC-210**

**ROLLING STORAGE CHEST**

Dimensions: 29 1/2"W x 20"D x 36"H



## ENTERTAINMENT & STORAGE

**WARDROBE & STORAGE** - Wardrobes feature 270 degree wrap-around hinges. Custom lacquers are available for all crate items. Locking hasps can be added to accomodate a personal padlock.



**JC-241**

**CLASSIC CRATE STORAGE CHEST**

Dimensions: 40"W x 24"D x 16"H



**JC-301**

**BEDSIDE TABLE**

Dimensions: 19"W x 18"D x 22 1/2"H



**JC-909**

**SMALL BOOKCASE**

Dimensions: 22"W x 18"D x 35"H



**JC-960**

**CAMP STORAGE CUBBIE**

Dimensions: 19"W x 13"D x 24"H



**JC-801**

**CLASSIC WARDROBE**

Dimensions: 38"W x 22"D x 73 1/2"H



**JC-803**

**CLASSIC WARDROBE with SHELVES**

Dimensions: 38"W x 22"D x 73 1/2"H



**JC-804**

**SINGLE WARDROBE**

Dimensions: 22"W x 22"D x 68"H



**JC-805**

**CLASSIC WARDROBE with DRAWERS**

Dimensions: 38"W x 22"D x 73 1/2"H

## ENTERTAINMENT & STORAGE

**ENTERTAINMENT** - Bookcases are 18" deep and feature adjustable shelves every 6".

Each piece can be combined to create custom wall units. Add a custom lacquer to any piece of crate for just the right color finish.



**JC-904**

**BOOK CASE with DOORS**

Dimensions: 29"W x 18"D x 72"H



**JC-910**

**BOOK CASE with SHELVES**

Dimensions: 29"W x 18"D x 72"H



**JC-911**

**BOOK CASE with DRAWERS**

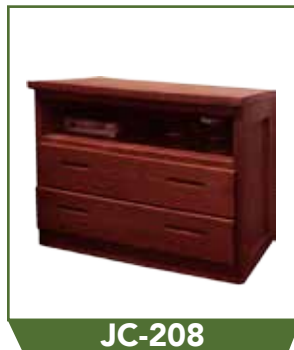
Dimensions: 29"W x 18"D x 72"H



**JC-914**

**WALL UNIT**

58"W x 18"D x 72"H



**JC-208**

**MEDIA CHEST**

Dimensions: 38"W x 18"D x 32 1/2"H

### IDEAL ARRANGEMENTS

Custom storage solutions can be configured for you.

There is also the option to add different storage options together for a unique unit.





## CLASSIC CRATE LIVING ROOM - Seating / Tables / Storage

**LIVING ROOM SEATING** - All seating has three ply end and back panel construction. They include Grade "A" cushions while additional fabrics and vinyls are available on page 16. Additional premium fabrics & vinyls are available upon request.



**JC-521**

### CLASSIC CRATE CHAIR

Dimensions: 28"W x 32"D x 25"H



**JC-531**

### CLASSIC CRATE LOVE SEAT

Dimensions: 52"W x 32"D x 25"H



**JC-511**

### CLASSIC CRATE SOFA

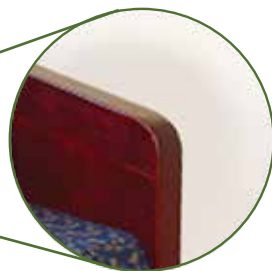
Dimensions: 76"W x 32"D x 25"H



**JC-501**

### CLASSIC CRATE OTTOMAN

Dimensions: 25"W x 13"D x 29"H



### RADIUS CORNERS -

For an additional charge, radius corners can be made for a safer solution specifically made for children & mental health facilities.



### REPLACEMENT CUSHIONS -

Our Classic Crate furniture has many replacement cushion options. Whether it be damage, wear and tear, or just looking to update the look of the room, replacement cushions can be ordered to bring all of our Classic Crate living room seating back to life.

## CLASSIC CRATE LIVING ROOM

**OCCASIONAL TABLES** - Durable, functional, and versatile. These laminate top tables are timeless and perfect for putting the finishing touches on any room. See our finishes (page 15) for additional color choices.



**JC-1217**  
**COFFEE TABLE**

Dimensions: 40"W x 27"D x 16"H



**JC-1219**  
**END TABLE**

Dimensions: 20"W x 25"D x 19"H



**JC-601**

**CLASSIC CRATE COFFEE TABLE**

Dimensions: 40"W x 26"D x 16"H



**JC-603**

**CLASSIC CRATE END TABLE**

Dimensions: 20"W x 26"D x 20"H



**JC-1218**

**CORNER TABLE**

Dimensions: 30"W x 30"D x 22"H



**JC-301**

**END TABLE w/ DRAWER**  
**(w/optional SILVER HANDLE)**

Dimensions: 19"W x 18"D x 22 1/2"H



## CRATE DINING - Tables / Storage

**STORAGE** - Cabinets, shelf units and more.



**JC-755**

**HUTCH CABINET**

Dimensions: 40"W x 19"D x 30"H



**JC-766**

**ADJUSTABLE SHELF UNIT**

Dimensions: 40"W x 19"D x 36"H



**JC-608**

**CLASSIC CRATE SOFA TABLE**

Dimensions: 50"W x 18"D x 24"H



**JC-770**

**CLASSIC SIDEBOARD**

Dimensions: 57"W x 20"D x 37"H



**JC-780**

**CREDENZA**

Dimensions: 70"W x 24"D x 34"H

## CRATE DINING - Tables / Seating

**TABLES & BENCHES** - Another durable addition to the Jess Crate selection.

Our tables can be made in a variety of styles and really come to life with the choice of a custom water-based lacquer. All tables come with laminate tops.



**JC-702-36**  
**MULTI-GAME TABLE**

Dimensions: 36"W x 36"D x 29"H

36" Game Table also available  
with wood or laminate top



**JC-705 - SIX-SEAT TABLE w/ LEGS**

Dimensions: 63"W x 35"D x 31"H

**JC-703 - FOUR-SEAT TABLE w/ LEGS**

Dimensions: 42"W x 35"D x 31"H



**JC-710**

**SMALL DINING BENCH**

Dimensions: 40"W x 14"D x 17"H

**JC-712 - LARGE DINING BENCH**

Dimensions: 58"W x 14"D x 17"H



**JC-704**

**SIX-SEAT TABLE with TRESTLE BASE**

Dimensions: 65"W x 35"D x 29"H

**JC-702 FOUR-SEAT TABLE with TRESTLE BASE**

Dimensions: 36"W x 36"D x 29"H



**JC-36R**

**FOUR-SEAT ROUND with LAMINATE TOP**

Dimensions: 36"R x 29"H



# CRATE DINING

## DINING SEATING - Arm Chairs & Side Chairs



**JC-720**

**ARM CHAIR**

Dimensions: 21"W x 20"D x 31"H



**JC-720C**

**ARM CHAIR with CASTERS**

Dimensions: 21"W x 20"D x 31"H



**JC-721**

**ARM CHAIR with 3-POSITION BASE**

Dimensions: 21"W x 20"D x 31"H



**JC-740**

**ARM CHAIR with SLED BASE**

Dimensions: 21"W x 20"D x 31"H



**JC-730**

**SIDE CHAIR**

Dimensions: 21"W x 20"D x 31"H



**JC-730C**

**SIDE CHAIR with CASTERS**

Dimensions: 21"W x 20"D x 31"H



**JC-731**

**SIDE CHAIR with 3-POSITION BASE**

Dimensions: 21"W x 20"D x 31"H



**JC-750**

**SIDE CHAIR with SLED BASE**

Dimensions: 21"W x 20"D x 31"H

## DESKS & CUSTOM LACQUERS



**JC-400**

### **DESK**

Dimensions: 42"W x 19"D x 30"H



**JC-401**

### **42" TABLE DESK**

Dimensions: 42"W x 19"D x 30"H

**w/ optional PENCIL DRAWER**



**JC-402**

### **42" STUDENT THREE DRAWER DESK**

Dimensions: 42"W x 24"D x 30"H

### **JC-404 50" STUDENT DESK**

Dimensions: 50"W x 24"D x 30"H



**JC-403**

### **STUDY CARREL**

Fits both the 42" & 50" desks  
Dimensions: 42"W x 12"D x 19"H  
or 50"W x 12"D x 19"H

**CUSTOM LACQUER FINISHES** - We finish our Jess Crate furniture with water-based lacquers rather than oil-based lacquers. While both varieties are applied in the same manner, oil-based resins and lacquers are composed of many groundwater pollutants and contain six times as many Volatile Organic Chemicals (VOCs) as water-based lacquers. VOCs are common in household products but are known to have harmful short- and long-term health effects. Water-based lacquers are not only the safest option but also the most environmentally friendly. They also dry three times faster and are more UV resistant and durable than oil-based options today.

**CHERRY**



**AGED HONEY**



**NATURAL**



**DARK WALNUT**



**WHITE WASH**



**BLACK**



Water-based lacquers are more efficient, much more environmentally friendly and safer for you & your family.

## FABRICS & VINYL

**GRADE "A" FABRICS & VINYL** - Colors may appear minimally different in person compared to on paper or online. Many additional options available including  CRYPTON fabrics. Speak with our sales team to find the best look.

### GRADE "A" VINYL



Sierra Royal

Madrid Dark Green

Oxen Brown

Heidi Scarlet

Heidi Charcoal

Heidi Black

### WARP SPEED SHERPA

#### Grade "A" Fabric



Academy

Autumn

Billiard

Black

Brown Haze

Cardinal

Royal

Dark Blue

Grape

Gray Heather

Indigo

Maroon

Navy

Scarlet

### WARP SPEED SHIRE

#### Grade "A" Fabric



Ascot

Black Marble

Bricktown

Commodore

Country

Espresso

Fossil

Hopsack

Ink

Koala

Marigold

Patina

Red Rose

Sesame

Steel Blue

Titan Blue



# Welcome to JESS STEEL

## INTRODUCING CAMPUS STEEL

Our Jess Steel Campus Collection was designed specifically with heavy duty, fully-welded steel for institutional environments where use and abuse is an everyday factor. This ultimate bedroom collection matches the durability our customers expect without compromising on style.

## DURABLE

Each bunk bed is made with a tubular sleep surface for added durability and can easily demount into two separate beds, no tools necessary! Our chests and nightstands are made with recessed drawer handles and heavy-duty metal drawer glides. Each wardrobe includes strong handles with an optional locking hasp for privacy.

## STYLE

The rich brown metal finish conveniently matches our campus steel chests, wardrobes, and beds with a warm cherry laminate drawer front to brighten up any room.

## FAST

Need a quick delivery? We know lengthy lead times can be stressful, so our most popular Campus Steel products are kept in stock for speedy shipments.



## JESS STEEL - Campus Collection / Bunks / Cots / Storage

**BEDS & BUNK BEDS** - All beds are customizable to meet your needs. Extremely easy to convert a single to a bunk with our wedge lock brackets. There's never a need for tools or other hardware.

**SIZING** - Steel beds and bunks come in standard lengths of 75" or 80" & widths of 30", 36", or 39".



**JS-150**

**CAMPUS STEEL BUNK**

Can be separated to form two twin beds  
Dimensions: 39"W x 79"L x 62"H



**JS-151**

**CAMPUS STEEL SINGLE BED**

Two can be combined to form a bunk bed  
Dimensions: 39"W x 79"L



**JS-151SL**

**CAMPUS STEEL BUNK**

**with ATTACHED SIDE LADDER & RAIL**  
Dimensions: 39"W x 79"L x 62"H



**JS-110 - TWO DRAWER UNDER BED  
DRAWER UNIT**

Dimensions: 63"W x 21"D x 9"H



**JS-255**

**CAMPUS STEEL 3/4/5  
DRAWER CHESTS**

Dimensions: 30.5"W x 22.5"D x 49"H



**JS-351**

**CAMPUS STEEL NIGHT STAND**

Dimensions: 19"W x 19"D x 26.5"H



**JS-853**

**CAMPUS STEEL DOUBLE WARDROBE**  
**with or without STORAGE**

Dimensions: 36"W x 24"D x 78"H



**JS-854**

**CAMPUS STEEL SINGLE WARDROBE**

Dimensions: 24"W x 24"D x 78"H



## STEEL BEDS - Steel beds / Bunks / Cots

**BEDS & BUNK BEDS** - All beds are customizable to meet your needs. Extremely easy to convert a single to a bunk with our wedge lock brackets. There's never a need for tools or other hardware.

**SIZING** - Steel beds and bunks come in standard lengths of 75" or 80", with widths of 30", 36", or 39".



**JS-130**  
**MASTER STACKER TWIN BUNK**

Two can be separated to form two twin beds    Two can be combined to form a bunk bed



**JS-131**  
**MASTER TWIN BED**



**JS-160**  
**UNIVERSITY BUNK BED**



**JS-161**  
**UNIVERSITY BED BASE**



**JS-162**  
**UNIVERSITY ADJUSTABLE-HEIGHT  
BUNK BED**

Adjustable to 7 different heights



**JS-127**  
**ROOMMATE BED**



**JS-BXBB**  
**ARMY BUNK BED**



**JS-BXB**  
**ARMY BED**



## STEEL BEDS - Steel beds / Bunks / Cots

### BEDS, BUNK & COTS



**JS-713**  
**MASTER BRUTE BUNK BED**

Extremely heavy duty with steel pad sleeping surface. Can be separated to form two twin beds



**JS-712**  
**MASTER BRUTE BED**

Extremely heavy duty with steel pad sleeping surface. Two can be combined to form a bunk bed



**JS-120**  
**JESS STEEL BUNK BED**

Wood bed ends & spring deck



**JS-121**

**JESS STEEL BED**

Wood bed ends & spring deck



**JS-XB1**

**FOLDING COT**



**JS-XB6**

**FOLDING COT**



**JS-XK14**

**FOLDING COT**

More steel beds, cots, sizes, and colors are available upon request. Speak with a member of our sales team today to find what best fits your needs.

## STEEL DINING - Tables / Table Tops / Seating

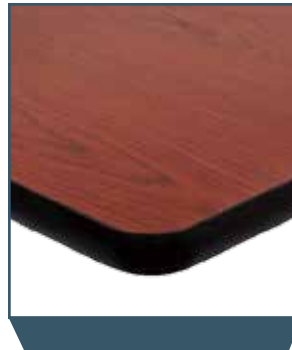
**STEEL DINING TABLES** - Tables are available in custom sizes and shapes. The mar resistant laminate table tops and durable cast iron table bases make for another strong choice in the Jess Steel Collection. The baked-on powder coat finish adds to the strength while the commercial grade leg glides protect your floors.



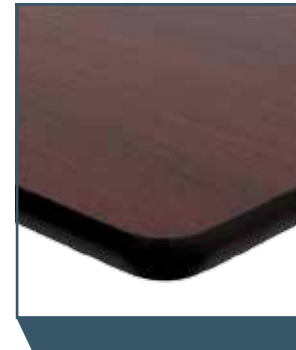
JS-701 JESS CAFE TABLE 30"



JS-702 JESS STEEL BAR  
HEIGHT TABLE 42"



CHERRY / DARK MAHOGANY



MAHOGANY / BLACK



WALNUT / OAK



SHAPES

AVAILABLE SIZES

SQUARE	24" x 24"	30" x 30"	36" x 36"		
RECTANGLE	24" x 24"	24" x 30"	24" x 48"	30" x 42"	30" x 48"
CIRCLE / ROUND	24"	30"	36"	42"	48"

OTHER TABLES & TABLE TOP COMBINATIONS AVAILABLE UPON REQUEST.



## STEEL DINING

**CHAIRS & BAR STOOLS** - All chairs below can be ordered as barstools for desired height.



**LADDER BACK DINING CHAIR**

JS-750B - Ladder Back Bar Stool



**X-BACK DINING CHAIR**

JS-760B - X-Back Bar Stool



**JS-209**

**MISSION SLAT BACK CHAIR**

JS-209B - Mission Slat Back Bar Stool



**JS-210**

**MARIE WINDOW PANE CHAIR**

JS-210B - Marie Window Pane Bar Stool



**JS-600**

**ABBAY STACKING SIDE CHAIR**

JS-600B - Abbey Bar Stool



**JS-601**

**MARGARITA STACKING SIDE CHAIR**

JS-601B - Margarita Bar Stool



**JS-602**

**LEON STACKING SIDE CHAIR**

JS-602B - Leon Bar Stool



**JS-580**

**SARA STACKING SIDE CHAIR**

JS-580B - Sara Bar Stool



## LOCKERS - Multiple Tiers / Styles / Colors

**LOCKERS** - All lockers are customizable to meet your needs. Very heavy duty designs are available with ventilation, multiple tiers, sloped tops, and a variety of colors. Accessories include built-in locks, padlocks, and number plates. Volume discounts are available.

**ADDITIONAL INFORMATION** - Lockers can ship preassembled with all seams and joints welded for rigidity & durability. They are 16 gauge steel flanged for the locker body & 18 gauge back vertical corners. One-piece 14-gauge steel is formed to channel-shape formations. Lockers can be combined to form tiers & shapes shown on the next page.

### **CUSTOMIZE -**

- Built in Locks
- Padlocks
- Number Plates

### **AVAILABLE TIERS -**

- Single
- Double
- Triple
- Multiple Tiers

**DIMENSIONS** - Sizes range from:  
12"W x 9"D x 60"H to 24"W x 18"D x 72"H



**JS-4000 SERIES**

**SINGLE TIER LOCKER**



**JS-5000 SERIES**

**SINGLE TIER  
HEAVY DUTY LOCKER**



**JS-6000 SERIES**

**SINGLE TIER HEAVY DUTY  
VENTILATED LOCKER**



Built in Lock & Padlock  
Options

# LOCKERS

## TIERS / PRODUCT NUMBERS -

### JS-4000 SERIES

JS-4000 - Single Tier Locker  
JS-4200 - Double Tier Locker  
JS-4300 - Triple Tier Locker  
JS-4400 - Multiple Tier Locker

### JS-5000 SERIES

JS-5000 - Single Tier Heavy Duty Locker  
JS-5200 - Double Tier Heavy Duty Locker  
JS-5300 - Triple Tier Heavy Duty Locker  
JS-5400 - Multiple Tier Heavy Duty Locker

### JS-6000 SERIES

JS-6000 - Single Tier Ventilated Locker  
JS-6200 - Double Tier Ventilated Locker  
JS-6300 - Triple Tier Ventilated Locker  
JS-6400 - Multiple Tier Ventilated Locker

## POPULAR ARRANGEMENTS -



**DOUBLE TIER**



**TRIPLE TIER**



**BOX-STYLE**



**BRIDGE-STYLE**

LOCKERS CAN BE COMBINED TO FORM MANY TIERS & ARRANGEMENTS AS SHOWN ABOVE.  
CAN BE SHIPPED PREASSEMBLED AND VOLUME DISCOUNTS ARE AVAILABLE.

## JESS BEHAVIORAL HEALTH COLLECTION - Beds / Seating / Tables / Storage

**ENDURANCE SERIES** - These long lasting and durable options are specifically made for Behavioral Health Facilities, Correctional Facilities, Residential Institutions, and all extreme environments. All products are made with rotationally molded polyethylene and are flame retardant. Virtually every item can be bolted to a floor or wall while others can be filled with sand or water for added weight.



**JB-121**  
**JESS BEHAVIORAL HEALTH BED**  
Fits a 30" x 75" mattress



**JB-121XL**  
**EXTRA LONG JBH BED**  
Fits a 36" x 80" mattress

### ENDURANCE BEDS -

- Durable, one piece, rotationally molded design for increased strength
- Option to bolt to floor via concealed pilot holes with hardware of your choice
- Comes with molded side slots for property box storage
- Stain & Bed Bug resistant
- Flame retardant
- 10 year warranty
- Available in multiple colors
- Field installed restraint rings available



**JB-730**  
**JESS BEHAVIORAL HEALTH**  
**STACKING CHAIR**



**JB-740**  
**JESS BEHAVIORAL HEALTH**  
**ARM CHAIR**



**JB-750**  
**JESS BEHAVIORAL HEALTH**  
**ARMLESS CHAIR**



**JB-521**  
**JESS BEHAVIORAL HEALTH**  
**LOUNGE CHAIR**



# JESS BEHAVIORAL

## ENDURANCE SHELVING & STORAGE



**JB-203**

**JB OPEN CHEST**

Dimensions: 30"W x 18"D x 42"H



**JB-301**

**JB NIGHTSTAND**

Dimensions: 30"W x 18"D x 29"H



**JB-501**

**JB FLOOR-MOUNTABLE STOOL**

Dimensions: 16.5"W x 12"D x 15.5"H



**JB-601**

**JB COMMON AREA TABLE**

Dimensions: 23.75"W x 23.75"D x 14.75"H



**JB-701**

**JB DINING TABLE**

Dimensions: 42"W x 42"D x 29"H



**JB-901**

**JB WALL SHELF**

Dimensions: 30"W x 12"D x 18"H



**JB-910**

**JB FOUR-SHELF WALL MOUNT**

Dimensions: 25"W x 14"D x 49"H



**JB-911**

**JB ENDURANCE DESK**

Dimensions: 39"W x 24"D x 36"H

## JESS UPHOLSTERY - Contract Upholstery / Simple Assemble

**JU-26000 SERIES** - Our fully-upholstered furniture components include frames, springs, and foam. They meet or exceed the industry's highest standards. There is no assembly required. Refer back to page 16 for our vinyls and fabrics. Every piece is customizable to include your choice of fabric or vinyl.



**JU-26001 - CHAIR**

39"W x 37"D x 40"H



**JU-26002 - LOVE SEAT**

63"W x 37"D x 40"H



**JU-26002S - LOVE SEAT SLEEPER**

63"W x 37"D x 40"H

Opens to a twin mattress



**JU-26004 - SOFA**

83"W x 37"D x 40"H

### JU-28000 SERIES -



**JU-28001 - CHAIR**

33"W x 34.5"D x 34"H



**JU-28002 - LOVE SEAT**

57"W x 34.5"D x 34"H



**JU-28002S - LOVE SEAT SLEEPER**

57"W x 34.5"D x 34"H

Opens to a twin mattress



**JU-28004 - SOFA**

77"W x 34.5"D x 34"H

**JU-500 SERIES (SIMPLE ASSEMBLE - LOUNGE SEATING)-** Our easy assemble furniture is delivered disassembled and is perfect for housing with small doors and windows. This line of products are incredibly customizable with absolutely no tools required for assembly. Select your favorite arm style below with your choice of any fabric or vinyl. Like any of our upholstered pieces, the Simple Assemble is made for heavy use environments and with the comfort you expect.



**JU-511M - SOFA**  
81"W x 35"D x 35"H



**JU-521E - CHAIR**  
35"W x 35"D x 35"H



**JU-531H - LOVE SEAT**  
58"W x 35"D x 35"H

**E****G****H****M****S**

**CHOOSE YOUR ARMSTYLE -**

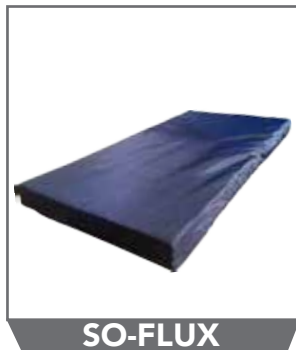
Multiple shapes and styles.

Note: The suffix at the end of the product number depicts your armstyle choice as show above.

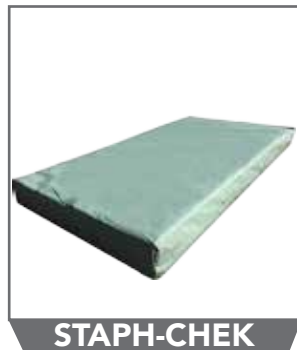


## JESS CRATE SPECIALTY MATTRESSES

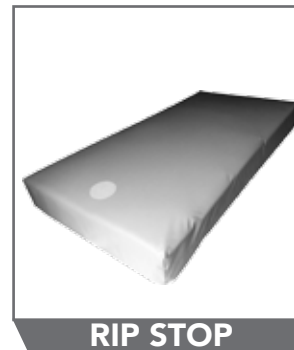
**MATTRESSES** - We have three mattress covers available that are included in standard mattress pricing. Our So-Flux (nylon cover) mattress has inverted seams. Our Staph-Chek & Rip Stop mattresses are welded shut with inverted seams to prevent bed bugs, dust mites, and other allergens. They are extremely easy to clean and meet all California Fire specifications. These mattresses are also very resistant against water and bodily fluids and are all anti-microbial. Custom size mattresses and box springs are also available.



**SO-FLUX**  
NAVY NYLON COVER



**STAPH-CHEK**  
GREEN VINYL COVER



**RIP STOP**  
GRAY RIP-STOP COVER



**RIP STOP**  
GRAY RIP-STOP COVER  
w/ OPTIONAL ATTACHED PILLOW

**WE PROVIDE MORE** - Jess Crate provides more than just furniture. We are a one-stop solution for all of your needs. Ask us about our additional products listed on the next page:

## LINENS & MORE

**EXTRAS** - Make the finishing touches on your project with our additional products listed below. Sheets, bath towels, comforters, and polar fleece blankets all come in multiple colors and sizes.



BED BUG COVERS

- ECONOMY VINYL
- POLYKNIT FABRIC
- SO-FLUX NAVY NYLON
- STAPH-CHEK GREEN VINYL
- SPECIALTY GRAY RIP-STOP



SHEETS



BATH TOWELS



PERSONAL CARE KIT



COMFORTERS



POLAR FLEECE BLANKETS



STAPH CHECK PILLOW

## TESTIMONIALS - We Love Our Fans

IT'S TRULY GREAT TO HEAR WHEN OUR CUSTOMERS ARE SATISFIED! PLEASE CONTACT US ABOUT YOUR EXPERIENCE WITH JESS CRATE.

### **ARLENE BELLO – CUA FISCAL MANAGER – BETHANNA, PHILADELPHIA, PA**

“Just wanted to let you know how fantastic the vendor we are working with is. Every time we have had an urgent need, they deliver. Recently, we had an emergency need for a bed. Because the vendor’s delivery schedule was booked, the supervisor of the store delivered it. This is just one example how committed they are to helping us with our mission!”

### **SUE O’HARE BALTIMORE, MARYLAND**

“My replacement cushions, pillows, and arm pads arrived earlier than expected! A pleasant surprise – they are absolutely gorgeous! I have received so many compliments already. The extra fabric came early, so my window valances were up when my cushions arrived! I even had fabric left over for placemats and toss pillows.”

### **MARK STONE – DIRECTOR of OPERATIONS - NEW DIRECTIONS, CLEVELAND, OHIO**

“We just want to thank you for all the hard work. I cannot begin to say how accommodating and attentive you were, and still are to our needs. You go above and beyond to make sure all orders are correct and on time. You even had the patience to handle our ever changing design needs. I cannot express the gratitude we have in working together. And the pricing is the best! It’s a real pleasure doing business with you guys”

### **KIM - SOUTH ORANGE, NJ**

“The delivery was great. Very quick. No issues. The furniture is great. We ordered some furniture from you guys before, but our family has since expanded and this furniture matches perfectly. We’re very happy.”



## SHIPPING & WARRANTY - Samples / Delivery / Our Guarantee

**FABRIC SAMPLES** - Jess Crate offers free fabric samples to help you coordinate your furniture. Simply call us Toll Free at (800)220-JESS and speak with one of our sales associates about ordering your samples today!

**FURNITURE DELIVERY** - Delivery is by common carrier and delivery rates are quoted on the size of the order and location of delivery. This service includes delivery of the packaged items to your home/business and placed in a safe and dry location outside your home/business. Inside delivery is available for most areas at an additional fee and needs to be arranged upon placing your order.

**OUR GUARANTEE - LIMITED WARRANTY** - All Jess Crate products are guaranteed against defects in materials or workmanship for a period of one year from the date of delivery when manufacturers' recommendations for use and care are followed. When making a claim under our product guarantees, the original purchaser must provide a copy of the original packing slip or other proof of purchase. Any fault warrantied item, if returned freight prepaid to Jess Crate, will be repaired or replaced, at our discretion, free of charge.

**OUR GUARANTEE** - Because we custom manufacture products especially for our customers, all orders cancelled after 72 hours are subject to a 30% restocking fee. Furniture returns are only accepted within 30 days of receiving the item. The furniture must be shipped back to our factory at the purchaser's expense.

Items must be in the original packaging and returned via a secured carrier approved by Jess Crate. The furniture must be received by our factory in new condition. Once received by our factory, a credit will be issued for the total of the item less a 30% cancellation fee. Shipping fees are non-returnable.

### SHIPPING FEES & CUSTOM ORDERS ARE NON RETURNABLE



**ADDITIONAL SHIPPING INFORMATION** - Merchandise is typically delivered in tractor-trailer rigs that can total 65 feet in length with a 4 foot trailer bed height. These rigs are unable to navigate around landscaping bushes, trees, and low electrical or phone lines. By law, our rigs are restricted to certain highways and may be restricted from entering certain residential neighborhoods. Our rigs are also not permitted to double park.

**PLEASE DISCUSS THE FOLLOWING OPTIONS AND PRICE DIFFERENCES BETWEEN LEVELS OF SERVICE,  
WITH YOUR SALES CONSULTANT. THEN SELECT THE BEST OPTION FOR YOU AND YOUR BUSINESS.**

**DROP SHIP CAUTION BIG RIGS!** - Merchandise is cartoned, and then delivered direct from the factory via common carrier tractor-trailer rigs. There is no installation crew. The driver will push merchandise to the back of the truck. 24-48 hour notice is available prior to arrival. Staff must unload the items from the truck and carry them in to the facility.

**CURB SIDE DROP SHIP CAUTION BIG RIGS!** - Merchandise is delivered to your premises in cartons. The truck driver will unload and place merchandise at the curb. 24-48 hour notice is available prior to arrival. Staff must carry the items in to the facility. Some merchandise can be delivered to your premises via standard UPS/RPS trucks.

**FULL SERVICE DELIVERY & INSTALLATION** - Smaller moving trucks will come to your facility. Their crew will uncarton and take each item to the designated room or area within the structures you specify, for assembly and setup. They will break down all cartoning and place waste or recycle in your appropriate bins. Prior to delivery, area must be cleared out and ready for merchandise to be installed. If your facility has steps or stairs with no elevator, we must be informed in advance, as there may be additional charges.

**PLEASE NOTE: WHEN YOUR ITEMS ARRIVE - INSPECT YOUR ORDER BEFORE ALLOWING DRIVER TO LEAVE.  
ALWAYS NOTE DAMAGED ITEMS ON THE BILL OF LADING.**

**SIGNING** - Signing the freight bill acknowledges that you have received the merchandise ordered and it was in good condition. Unless you indicate the specific problem on the freight bill and both you and the driver sign it, it will be difficult to file freight claims and remedy lost or damaged merchandise. If you have problems with the driver or merchandise, PLEASE CALL or FAX IMMEDIATELY!

- 1 - Call (800)220-JESS for advice on the action you took, or to describe the difficulty.
- 2 - Fax (215)625-3637 a copy of the freight bill that was noted and signed by the driver.
- 3 - A freight claim will then be filed on your behalf with a replacement ordered.